

# Model 600 Nozzle

## 405232901 Vapor Valve Kit

### Installation

Use this kit to replace the Vapor Valve, located on the side of Healy model 600 nozzles.

#### Parts List

Item	Description
1	Cover
2	Retaining Ring
3	Button Screws (2)
4	O-rings (2)
5	Vapor Valve
6	Valve Adjustment Assembly
7	Valve Assembly Spring

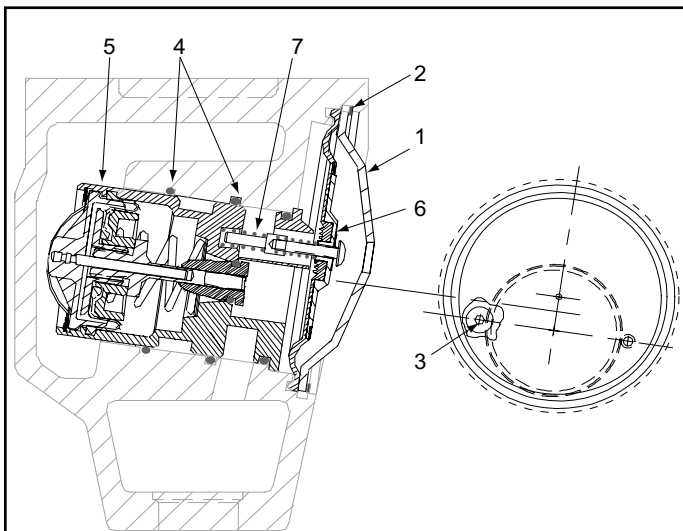


Figure 1: 600 Nozzle Vapor Valve Cross-Section View

#### Tool List

- Small Screwdrivers
- 1/16" (1.6mm) Allen (hex) wrench

**When working with petroleum equipment, make sure to follow all local safety and installation regulations.**

**Before working on the nozzle, remove it and make sure all gasoline is drained.**

#### Remove Existing Vapor Valve

1. Pull back the scuffguard to expose the vapor valve side cover.
2. Use the flat end of a screwdriver to remove the retaining ring (item 2, Figure 2) by prying the end away and pulling it out of the groove.



Figure 2: Remove Retaining Ring

3. Remove the cover (item 1), diaphragm (item 6) and spring (item 7).
4. Use a 1/16" (1.6mm) Allen Wrench to remove the 2 button screws (item 3).
5. Pull out the Valve Assembly (item 5).
6. Use a non-metallic pick to remove the two O-rings (item 4) from the nozzle body.

#### Install New Vapor Valve

1. Clean out the valve bore with a clean cloth.
2. Install the two O-rings (item 4) in the grooves in the valve bore (Figure 3).

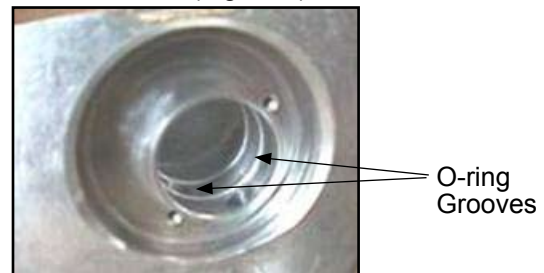


Figure 3: Vapor Valve Bore

3. Lightly lubricate the bore and O-rings with light oil.

4. Lubricate the O-rings (item 4) with light oil.
5. Turn the Vapor Valve (item 5) so the opening for the diaphragm stem is in the center of the recessed opening (Figure 4).
6. To help keep the O-rings in position, rotate the Vapor Valve back and forth slightly as it is pushed into position.
7. Align the vapor valve notches for the button screws (item 3) with the holes in the valve cavity.



**Figure 4: Vapor Valve in Position.**

8. Apply 1 drop of Loctite® 222 thread-locker or equivalent into the two screw holes (Figure 4).
9. Install the two button screws and use a 1/16" (1.6mm) Allen wrench to tighten them only hand-tight (Figure 5). Wipe off any excess thread-locker.



**Figure 5: Button Screws Installed.**

10. Insert the diaphragm stem spring into the diaphragm stem hole (Figure 5).
11. Install the diaphragm so the diaphragm stem is centered on the spring.

12. Make sure the diaphragm is seated below the retaining ring groove (Figure 6).

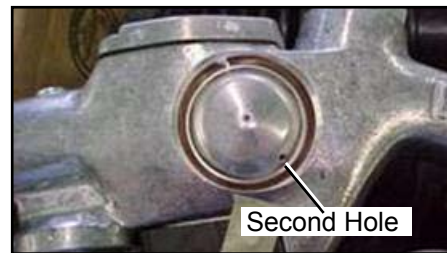


**Figure 6: Diaphragm Installed**

13. Install the cover and turn it so the second hole is as shown in Figure 8.
14. Insert the retaining ring (item 2) to hold the cover (Figure 7).



**Figure 7: Installing Retaining Ring**



**Figure 8: Installation Complete**

15. Verify operation by:
  - Connecting the nozzle to a Healy hose. Pressurize the hose and inspect for meter-creep and/or leaks from the valve side cover.
  - Perform the V/L test per TP201.5.



**Franklin Fueling Systems**

www.franklinfueling.com

3760 Marsh Road • Madison, WI 53718, U.S.A.

Tel: +1 608 838 8786 • Fax: +1 608 838 6433

Tel: USA & Canada 1 800 225 9787 • Tel: México 001 800 738 7610

**Franklin Fueling Systems GmbH**

Rudolf-Diesel-Strasse 20 • 54516 Wittlich, GERMANY

Tel: +49-6571-105-380 • Fax: +49-6571-105-510