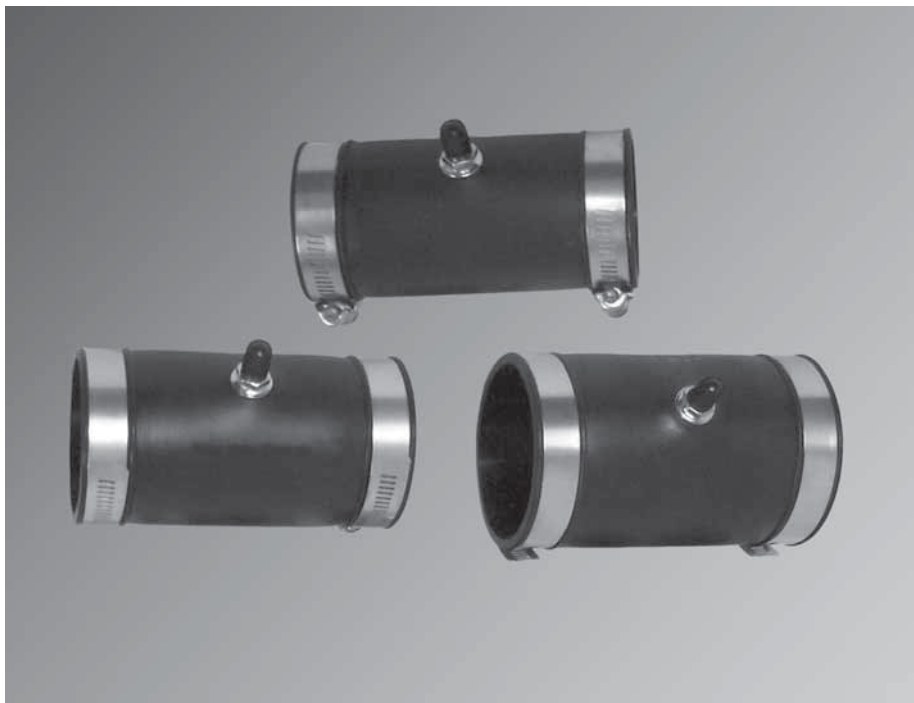




Swage Secondary Air Test Boot

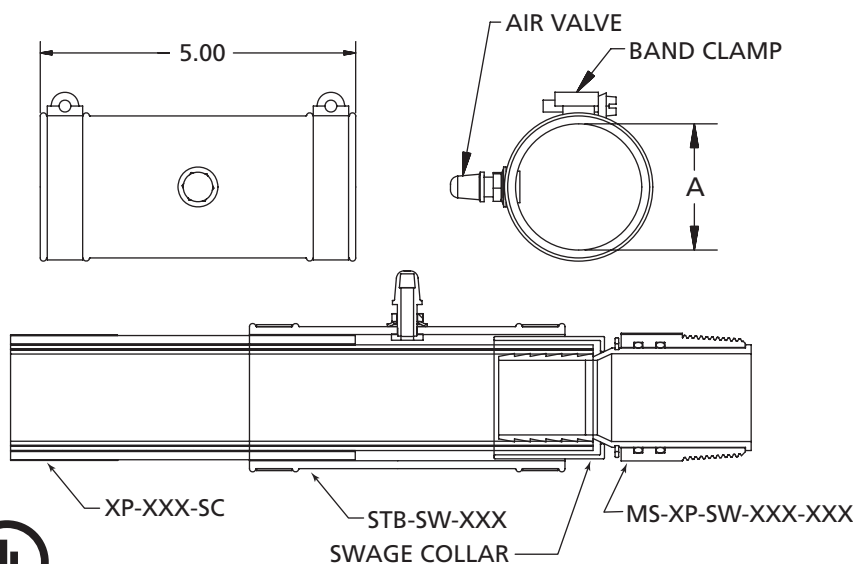
APT secondary test boots are designed for testing the integrity of SC flexible piping when using the APT swage fitting. Each boot has an air chuck for applying air pressure to the SC jacket to form an air-tight chamber for testing purposes. After testing is completed, slide boots back on the pipe system. The boots remain available for periodic testing as required by local regulations.



Design Highlights & Advantages

- Secondary test boots slip over the swage fitting after penetrating through the flexible entry boot.
- Boots are manufactured using fuel-resistant nitrile rubber and employ brass air chucks and stainless steel clamps for maximum corrosion resistance.
- Boots are easily clamped down over the collar and secondary with a screwdriver or 5/16" nut driver, forming an airtight chamber between the primary pipe and the secondary jacket.
- The secondary chamber is pressurized to 5-8 psi through air chuck to test system integrity.
- After pressure testing, the boots remain on the pipe for future use but are pulled back to permit back-flow of fuel leaks to the tank sump.

MODEL	DESCRIPTION
STB-SW-150	Secondary Test Boot for Swage XP-150 Piping
STB-SW-175	Secondary Test Boot for Swage XP-175 Piping
STB-SW-200	Secondary Test Boot for Swage XP-200 Piping



MODEL	DIM. "A"
STB-SW-150	2.12"
STB-SW-175	2.50"
STB-SW-200	2.88"

